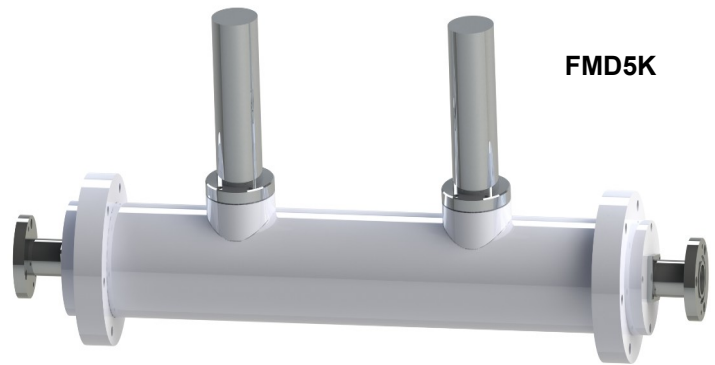
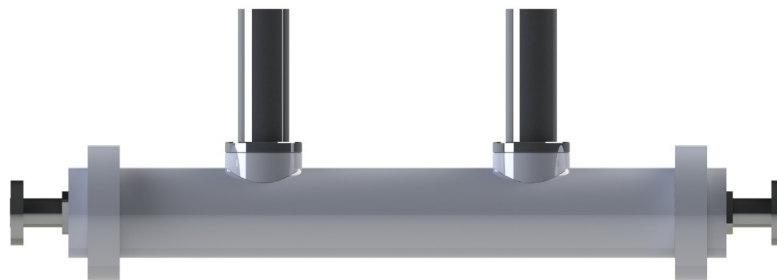


# MODEL FMD5K

- FINE MATCHER
- FM BAND 174 - 240 Mhz.
- Band III VHF DAB
- FINE TUNED ANTENNA FOR MINIMUM VSWR



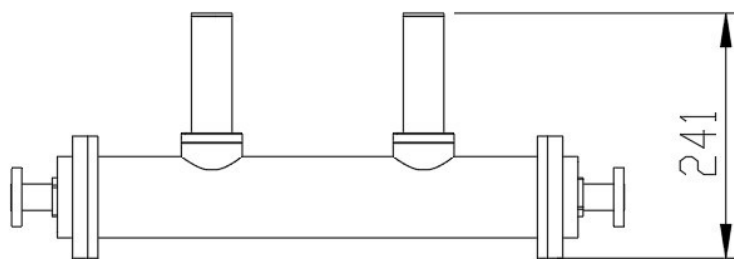
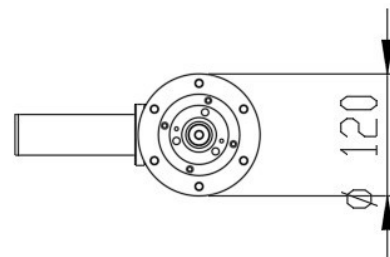
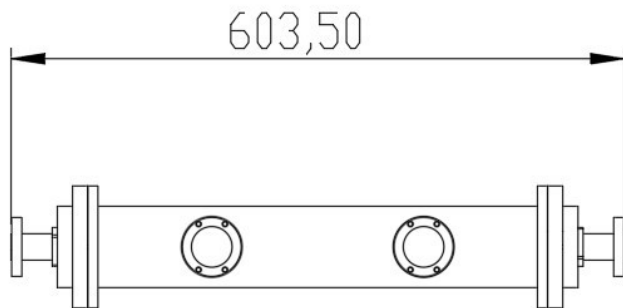
Although the TELECOMUNICAZIONI FERRARA antennas are tuned at the factory to provide a low standing wave ratio for the operating channel, when an antenna is mounted on a conductive metal object such as a tower or a pole its VSWR naturally increases. The fine matcher provides the user a quick and easy way to optimize the antenna for the absolute minimum VSWR and released signal degradation. With this device, tuning can be accomplished in a fraction of the time that it takes to tune competitive antennas without having to disassemble the feed-line. Tuning can even be accomplished without loss of system pressure.



TYPICAL SPECIFICATIONS	
<b>Model</b>	FMD5K
<b>Impedance</b>	50 ohm
<b>Frequency Range</b>	174-240 MHz
<b>Insertion Loss</b>	0.05 dB Max
<b>Connectors</b>	Input-Output 7/8" (Opt. 1+5/8")
<b>Max Power</b>	5KW
<b>Working Temperature</b>	-20°C +50°C
<b>Colour</b>	Enamel Gray Ral 7001
<b>Materials</b>	Aluminium, Brass, Copper, PTFE, Stainless Steel, Silvering (min 12 µm thickness)

"These specifications are subject to change without notice"

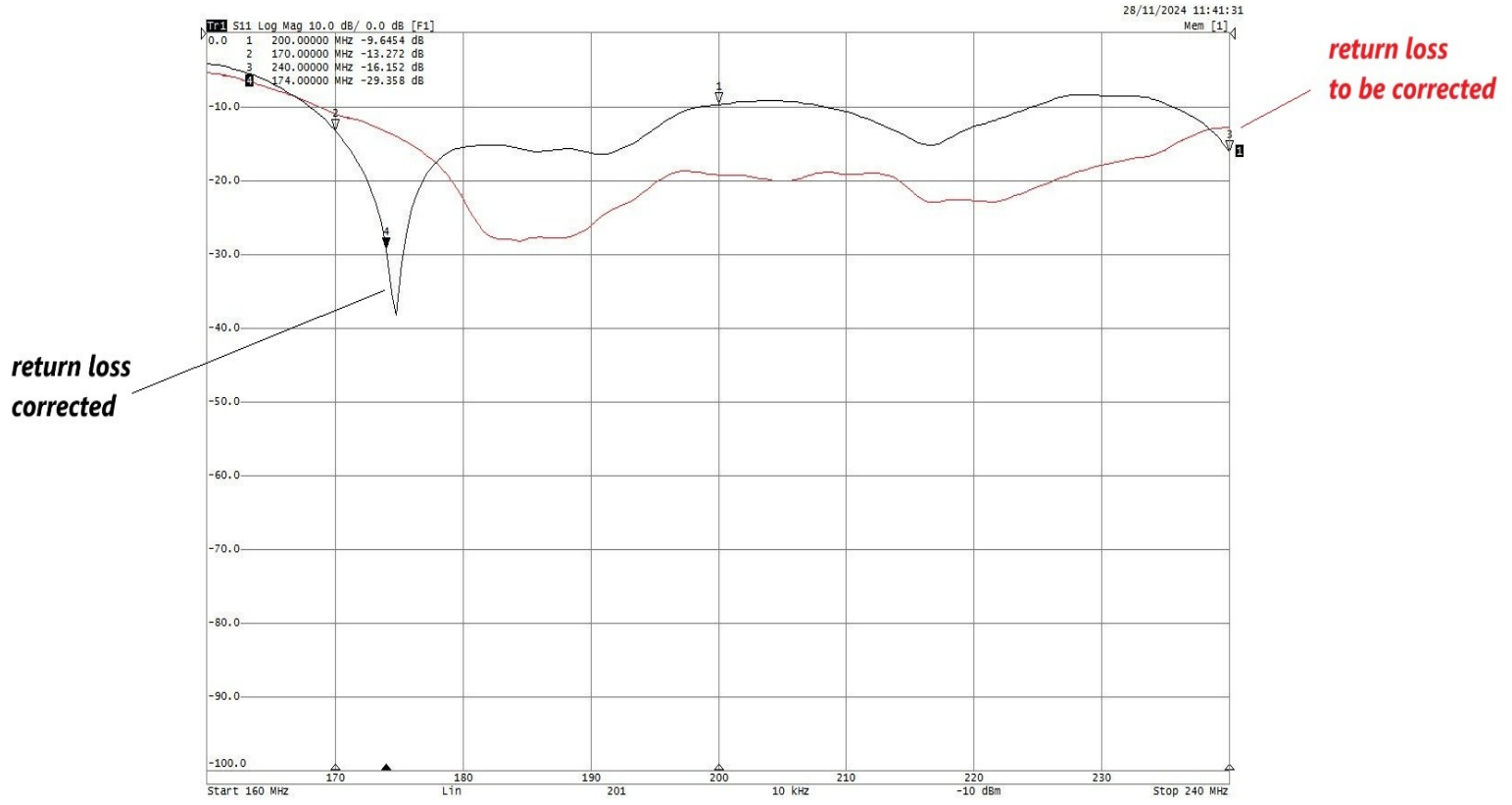
**DIMENSIONS mm.**



<b>Dimensions</b>	see figure
<b>Net Weight</b>	≈ 9 Kg approx.

"These specifications are subject to change without notice"

EXAMPLE OF TYPICAL USE



INSTALLATION POSITION

FIRST DIVIDER

FINE MATCHER



"These specifications are subject to change without notice"