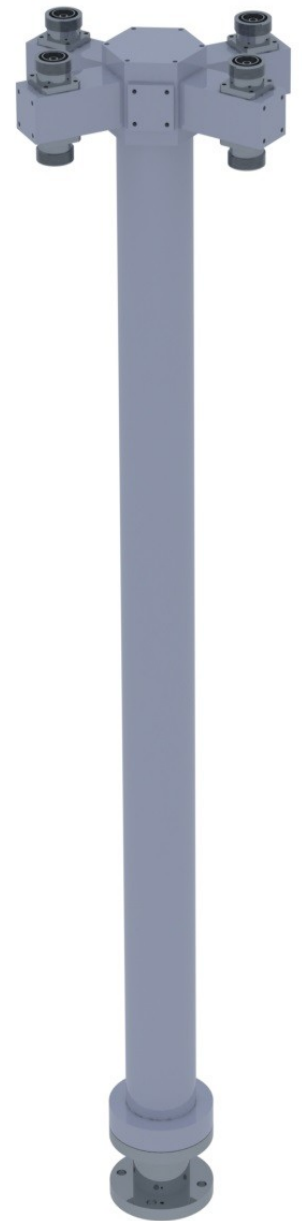


MODEL DV/8K-7/8 V
DV/8K-7/16 V

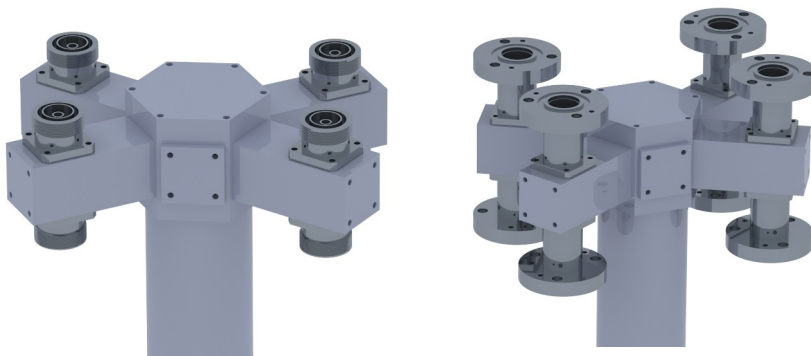
- DIVIDER IN 1+5/8" OUT 8 7/8" or 7/16"
- IMPEDANCE 50 Ohm
- VHF BAND 170÷240 MHz
- PRESSURIZED UPON REQUEST

MODEL	INPUT CONNECTOR	OUTPUT CONNECTORS	MAX POWER IN SINGLE CARRIER
DV/8K-7/16V	1+5/8"	8x 7/16"	10 KW
DV/8K-7/8 V	1+5/8"	8x 7/8"	10 KW

TYPICAL SPECIFICATIONS	
Impedance	50 Ohm
Frequency Range	170-240 MHz
VSWR	1.05:1 typical
Insertion Loss	0.05 dB Max
Max Power Input	See table
Number of outputs	8
Length approx.	1050mm
Diameter external tube	60 mm
Mounting	With equipment clamp (option)
Working Temperature	-20°C ÷ +50°C
Colour	Enamel gray ral 7001
Mat	Aluminium, Brass, Copper, PTFE, Silvering

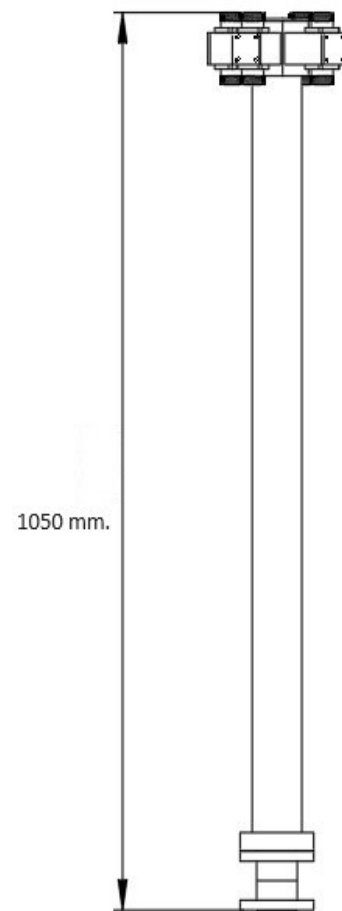
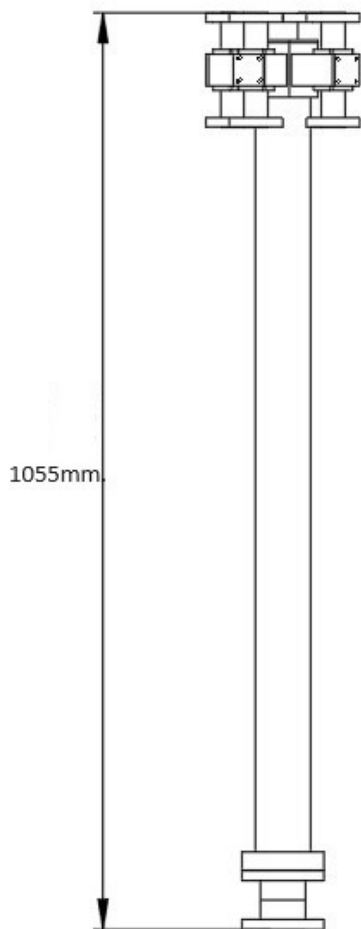
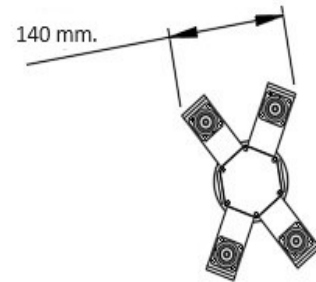
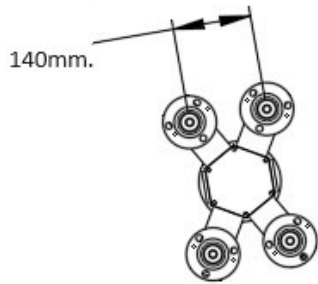


Example model DV/8K-7/16V



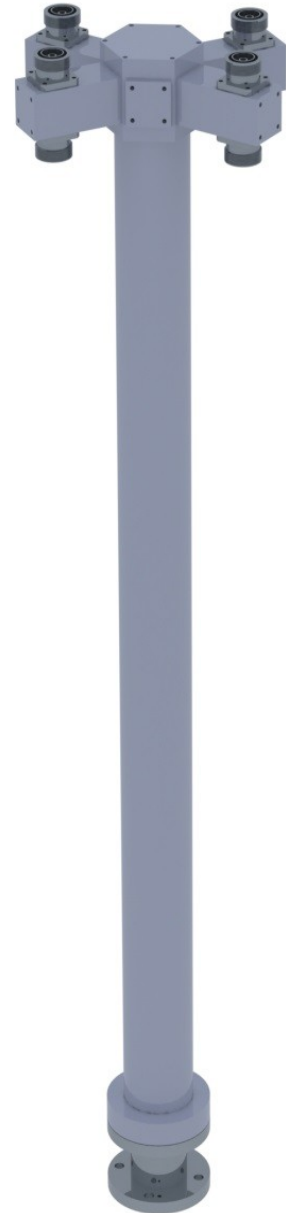
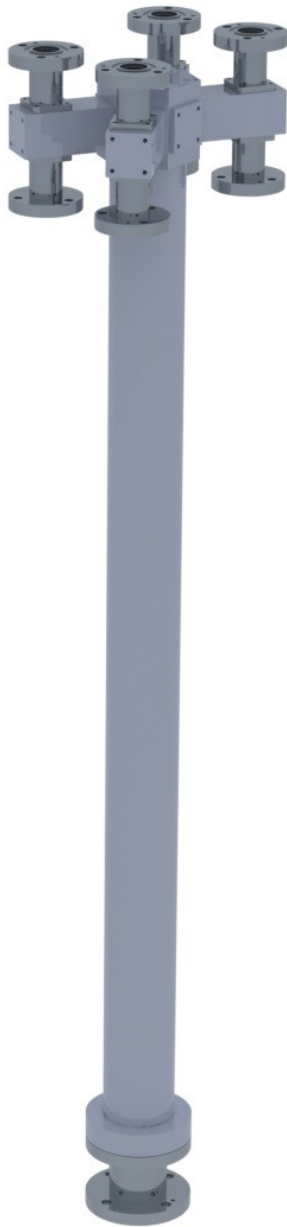
detail

DIMENSIONS AND WEIGHT

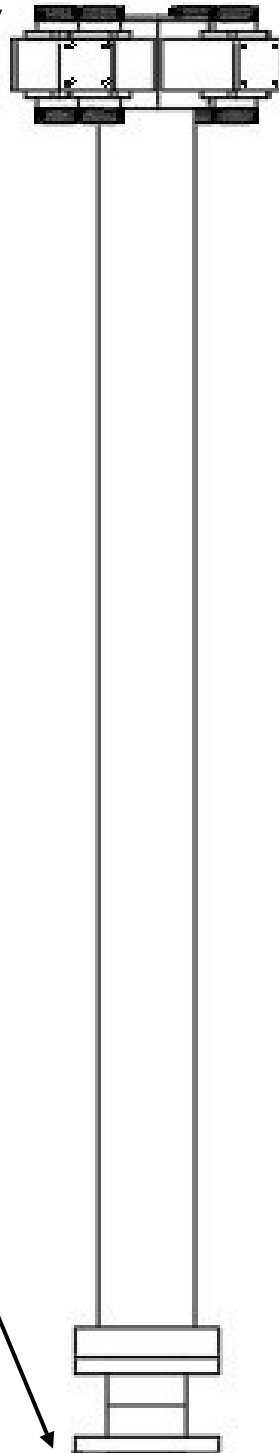


WEIGHT aprox. 6kg.

IEWS OF THE DIVIDERS



INFORMATIONS



ATTENTION:
WHEN THE CABLE TO SPLITTER
IS CONNECTED, DON'T LEAVE
ABSOLUTELY TO WAVE WITH
ALL ITS WEIGHT TOWARDS
THE BOTTOM

IN PHASE OF TEST ALL THE
SPLITTERS RESULTED
SUITABLE.

BEFORE THE INSTALLATION
IT IS ADVISED TO CONTROL
ALL THE SERRATIONS OF
INNER IN CONNECTORS.

ATTENTION:
ORIENT ALWAYS
DOWNSTAIRS

TYPICAL FINAL TEST

